



# Challenger10

## Sales Presentation



**United  
Technologies**

Climate | Controls | Security



**tecom**

# Challenger10 is ...

- + An advanced security solution designed for the commercial and corporate sector
- + The perfect solution for the security requirements of banks, retail outlets, educational facilities and more
- + A modular system which can be scaled for almost any application



# Overview of product scale

	V8	Challenger10
<b>Areas</b>	16	99
<b>Area Groups</b>	0	255
<b>Doors</b>	48 Intelligent / 16 RAS	96 Intelligent / 32 RAS
<b>Inputs</b>	256	1008
<b>Relays</b>	256	512
<b>Users</b>	50 users (exp 65,535)	2000 users (exp 65,535)
<b>Time zones</b>	32	64
<b>Power supply</b>	700ma	Intelligent 1.2amp
<b>Modem</b>	2.4k	56k
<b>RAS / DGP</b>	16 RAS & 15 DGPs	32 RAS & 31 DGPs
<b>Events</b>	1000	10,000
<b>Communications</b>	1	10 paths
<b>Ethernet</b>	NO	YES
<b>USB</b>	NO	YES
<b>Access groups</b>	128 Alarm / 10 Door /10 Floor	255 Alarm / 255 Door / 128 Floor

# Challenger10 key features

- Fully backwards compatible with existing Challenger V8 peripherals
- Perimeter area
  - Multiple internal areas can be linked to a perimeter area to control your site's entry/exit procedures
- 2 x RS-485 LANs
- 2,000 built-in users, with names and 10-digit pin
- User categories expanded
- Holidays now have date range
  - Start Date
  - End Date
  - Reoccurring
  - 8 Holiday Types
- Time zones
  - Each time zone has 8 segments
  - Each time zone has 8 holiday types



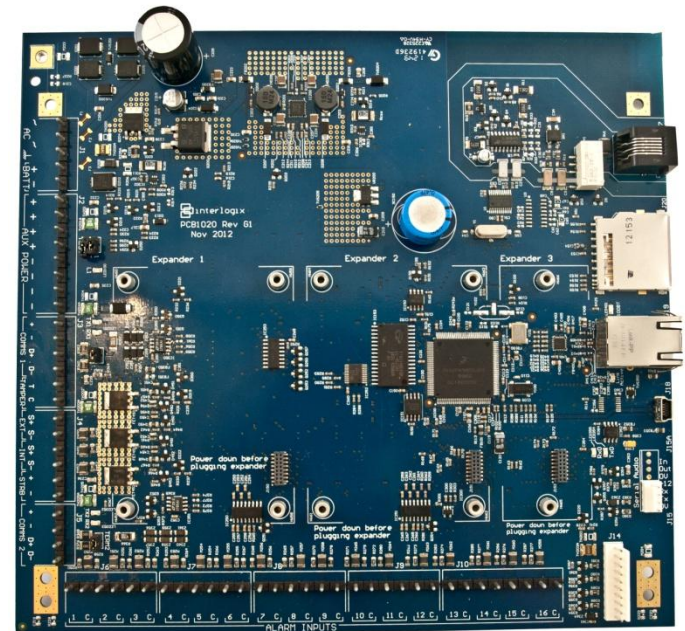


# Challenger10 key features

- Challenger10 panel can store 10,000 events
  - 5000 alarm events
  - 5000 access events
- Door Controller's have been changed to match Area Groups with area and door addressing
  - Firmware update required on Door Controller
  - Cater for 99 Areas
  - Soft time zones can now be assigned to doors
- RAS LED's can be mapped to any area
  - Area 4 can be mapped to LED 7 etc.
- Intelligent onboard power supply
  - Panel power usage and voltage can be checked via keypad
  - Check battery charging current via keypad
  - Auto resettable fuse protection
- Flash upgradable firmware
  - Via USB and separate utility

# Challenger10 board

- V8 Compatible Footprint (mounting holes & size) &
- Same terminal locations as V8
  - Allows for simple upgrade
- Latest CPU 32bit 120MHz
- 56K Modem
  - Increase upload/download speed (factor 10)
- SD Card (future use)
- Onboard Ethernet 10/100
- USB
- Serial RS-232 via J15
- Variable EOL on-board inputs
- 2 RS-485 LAN ports
- Intelligent power supply



# Intelligent Power supply

- Switch mode power supply
- Auxiliary 800mA power supply capacity
  - Short circuit protected
  - Reverse voltage protected
  - Total board current (Menu 19>29)
  - Voltage monitored (Menu 19>29)
  - If too much current is drawn from the auxiliary, auxiliary power is shutdown to protect communication and system functionality
- 300mA battery charging circuit
  - Constant regulated charging
  - Monitors:
    - Short circuits
    - Reverse voltage
    - Charge & discharge current (Menu 19>29)
    - Voltage (Menu 19>29)
- Current and voltage monitoring, will shut down external devices if any issue could damage the plug pack.
- Auto Resettable Fuses for Auxiliary, Battery, Sirens, Comms, Relays
- Maintain a regulated 13.8VDC on auxiliary outputs



# Features – Communication paths

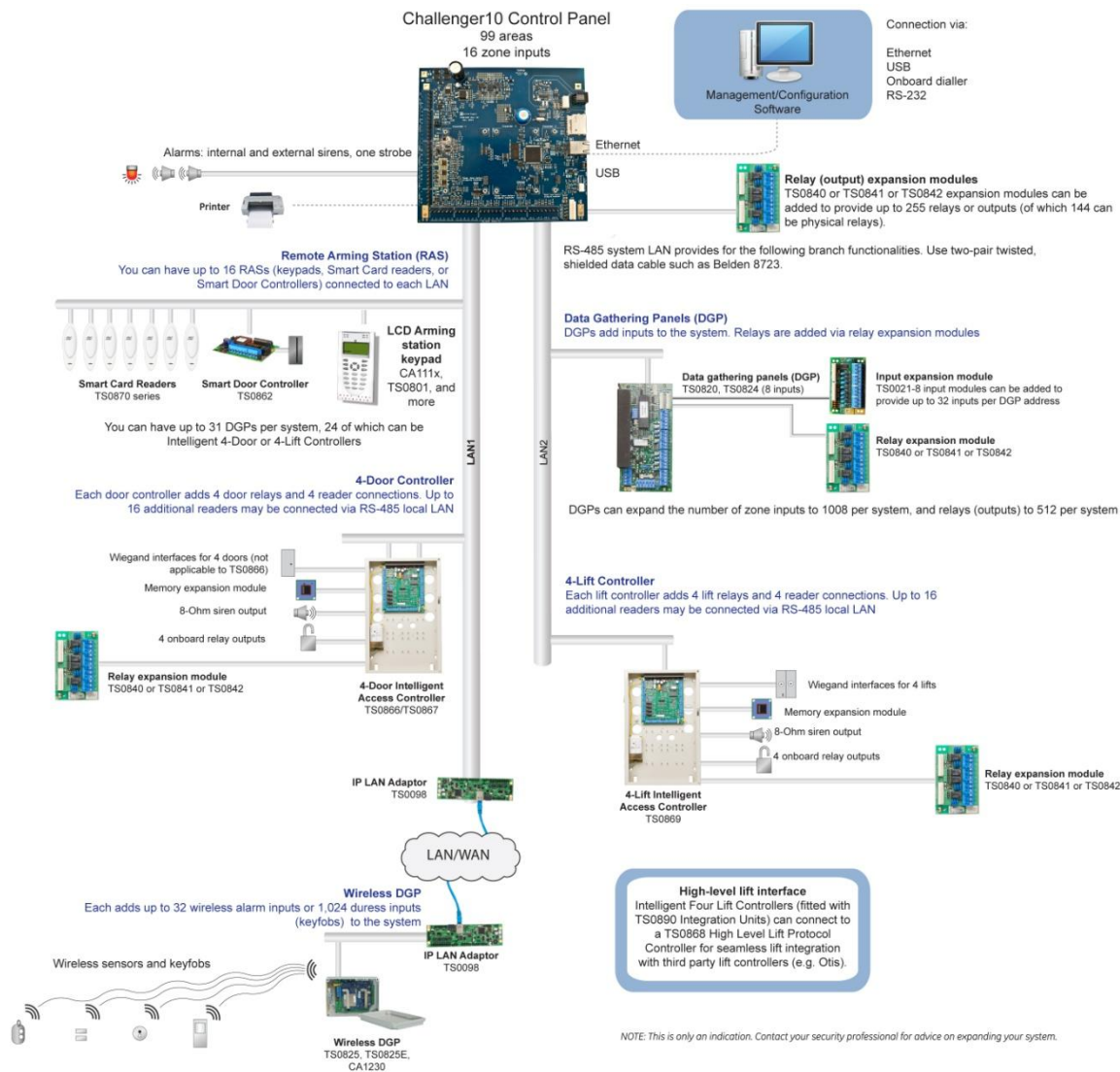
The Challenger10 panel uses advanced communication path technology and can provide the perfect solution and flexibility for your security needs.

- With Challenger10 you have the ability to filter by area, events and time, while communicating via multiple reporting formats
- Multi-tenanted sites can report alarms to their preferred security monitoring provider from a single panel
- Communicate on multiple paths over one Ethernet port, simultaneously

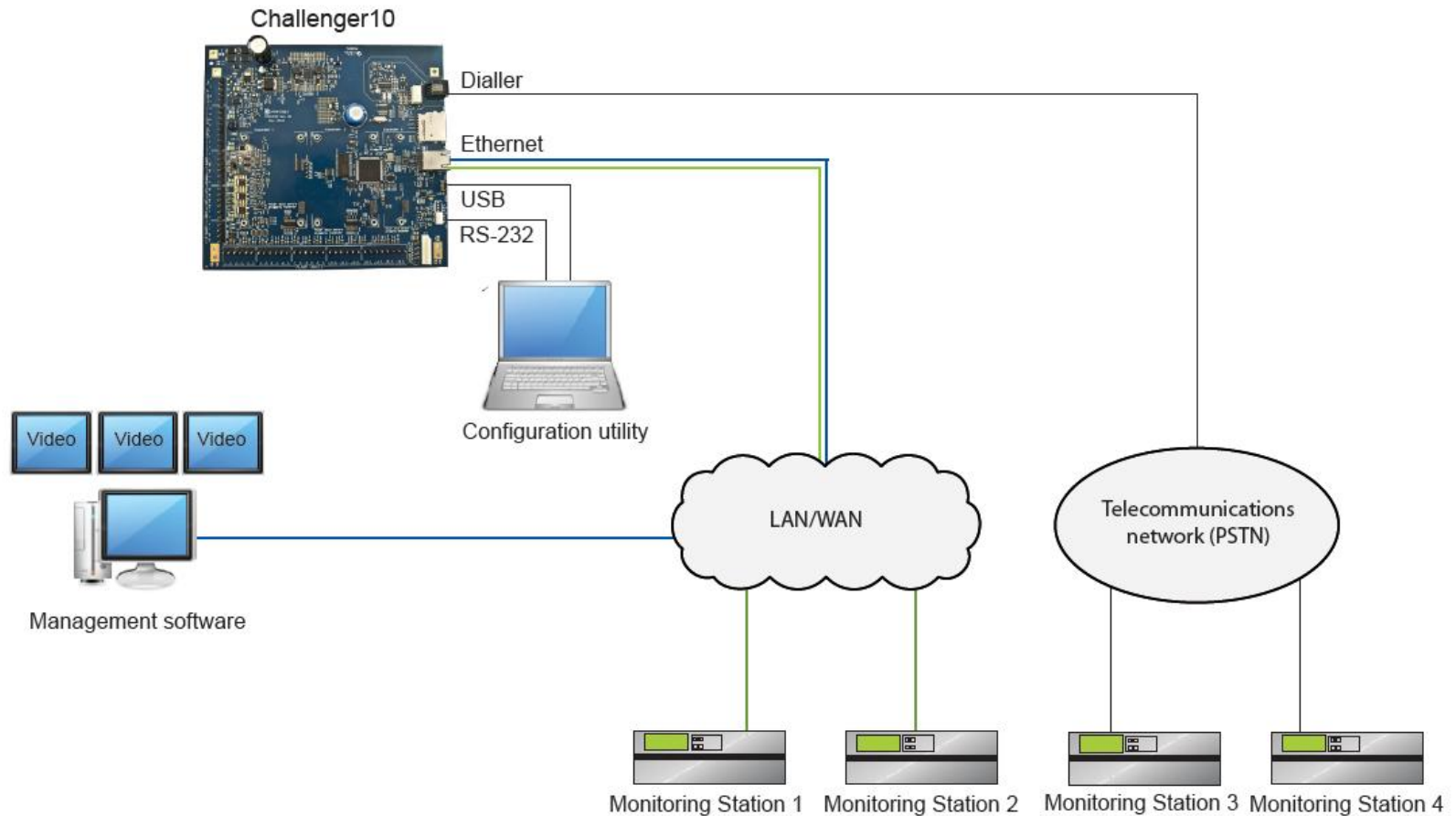
Format	IP	Dialler	USB	STU	RS232
Contact ID Modem		✓			
Computer Polled	✓	✓	✓	✓	✓
Computer Event Driven	✓				
Secure Steam	✓				
STU				✓	
Printer				✓	✓



# Challenger10 LAN diagram

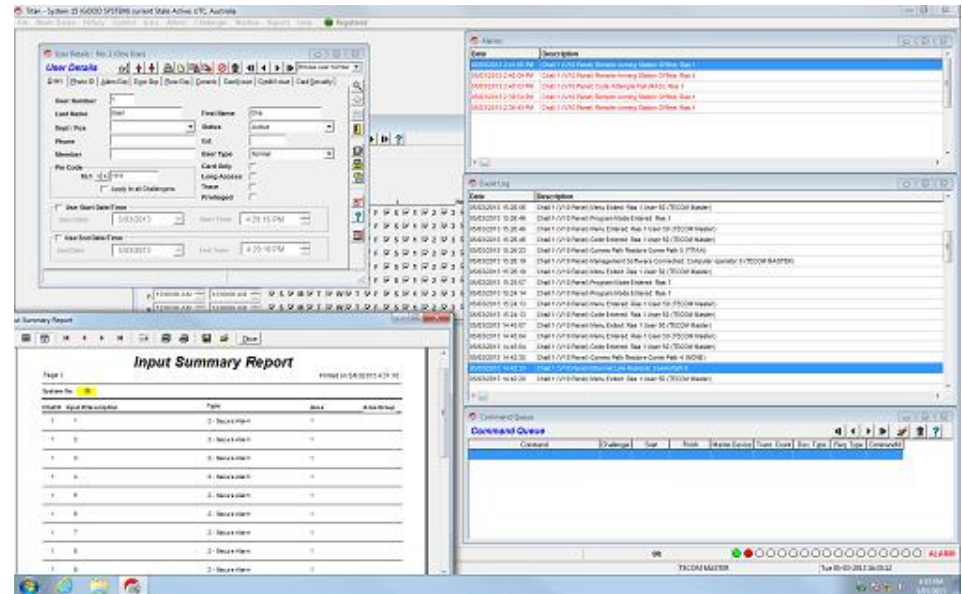


# Communications diagram

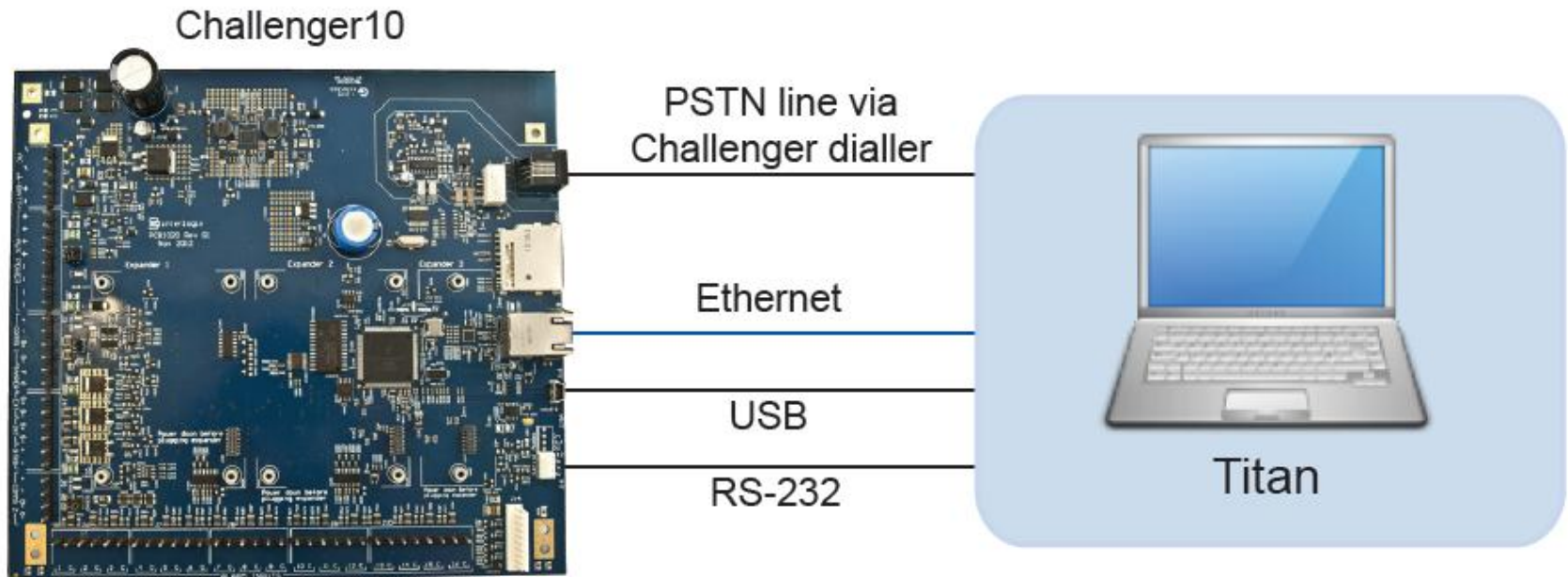


# New Features – Titan 3

- Simultaneous Challenger10 and V8 support
- Fully automated and built in V8 to Challenger10 migration utility
- Windows 7 64 bit support
- One time license (no license renewals or software subscriptions)
- Connect to Challenger panels via USB, RS-232, Ethernet or dialler)



# Titan 3 – Connectivity Options



Note: This is only an indication. Contact your security professional for advice on expanding your system